



Research
4 Challenges

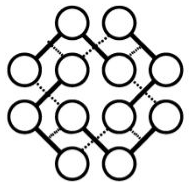
Bootcamp

Construyendo juntos el futuro de la educación
Building together the future of education

Movimiento abierto y redes para la sostenibilidad en el apoyo a investigadores y practicantes

Antonio Martínez-Arboleda (University of Leeds), Wilma van Wezenbeek (VU Amsterdam), Carina Bossu (The Open University), Francisco Iniesto Carrasco (Universidad Nacional de Educación a Distancia)





Research
4 Challenges

Introducción a la ciencia abierta

Wilma van Wezenbeek

31 de octubre 2023



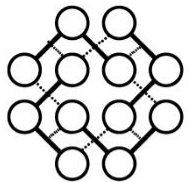
VRJJE
UNIVERSITEIT
AMSTERDAM

STUDENT & EDUCATIONAL AFFAIRS



Innovation Hub
Europe





Research
4 Challenges

The practice of open science aims to:

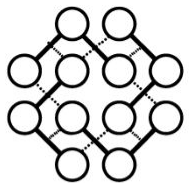


UNESCO

Abrir los procesos y los productos de la creación de conocimiento

Facilitar el acceso y la disponibilidad del conocimiento de todas las disciplinas

Promover la colaboración y el acceso libre a la información

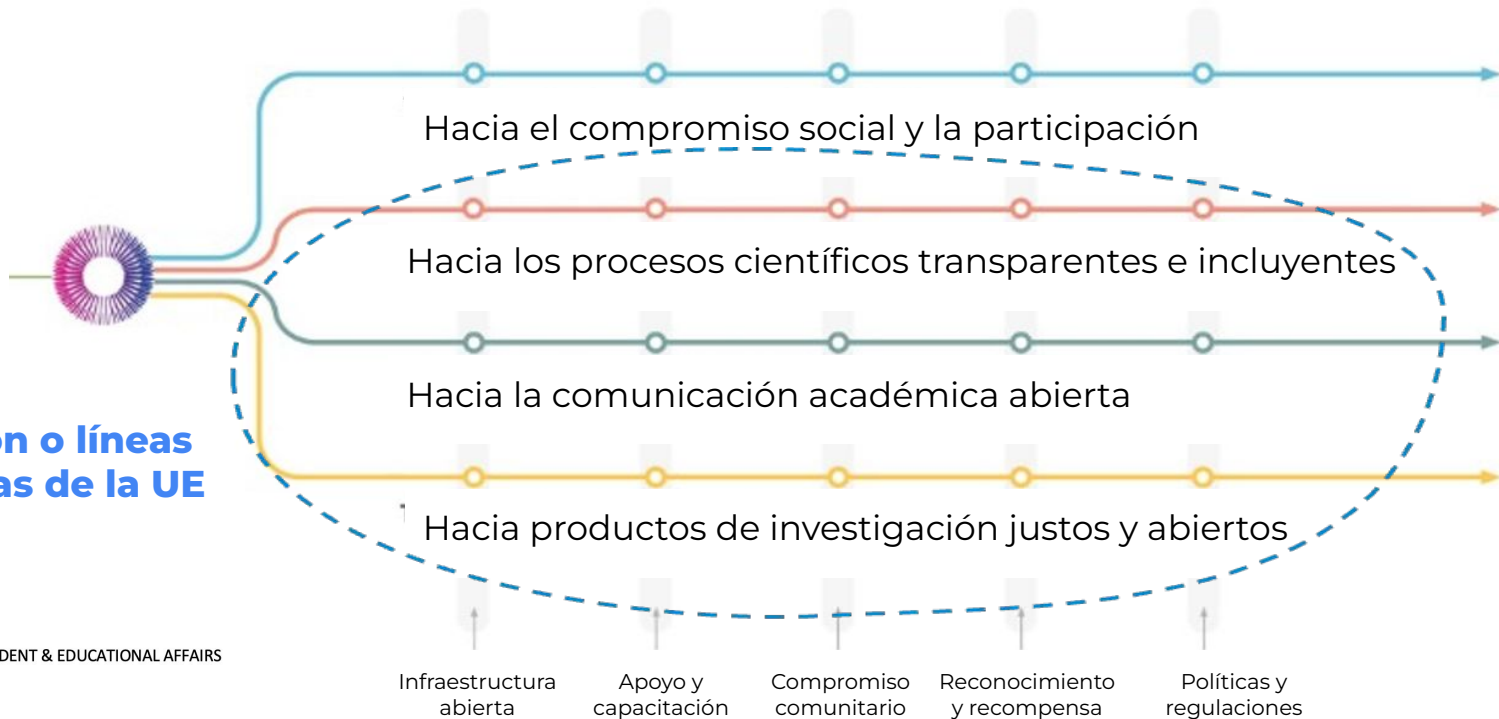


Research
4 Challenges

Ambición del Programa Nacional de Ciencia Abierta 2022-2030

Acorde con o líneas estratégicas de la UE

Agenda vigente

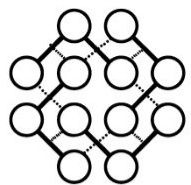


STUDENT & EDUCATIONAL AFFAIRS



Innovation Hub Europe





Research
4 Challenges

CC BY NC SA
Esther Plomp, 2022, Open Science Buffet, poster TNW
Science Day, <https://doi.org/10.5281/zenodo.6752965>

<https://tinyurl.com/OSBuffer>

*The term Open Science Buffet has been coined by Christina Bergmann in 2019.

Open Hardware Community Delft
@DelftOpenHW

Open Hardware

Data Steward & Data Champions

Research Support TU Delft Library
Training (Research Data Management 101 & Open Science MOOC), DMPonline, Research Data Management website,
4TU.ResearchData, data refinement fund

Digital Competence Center (Data Managers)

Managing and Sharing Data in 2021

Open Data

Policy:
RDM at TU Delft & Applied Sciences

GitHub/GitLab (& 4TU.ResearchData/Zenodo integration)

Open Software

Support from the Digital Competence Center (Research Software Engineers)

Training: Carpentries/Code Refinery

TU Delft Research Software Policy facilitates sharing of Research Software

Engagement is part of the TU Delft Core values (DIRECT)

'Outreach and public engagement are core elements' (TU Delft strategic priorities)

Online discussion and presentation platforms such as the Virtual Science Forum

Open Engagement

Open Evaluation

'Open science and education can play an important role in improving the quality of our work and stimulating the use of our knowledge and findings by others' - TU Delft Recognition & Rewards Perspective 2021 - 2024

The Dutch position paper Room for everyone's talent aims to recognise a wider range of academic contributions

Strategy Evaluation Protocol (SEP) 2021-2027 has Open Science as a main assessment criteria

La ciencia abierta es como un buffet: toma lo que puedas y que te beneficie y vuelve por más

Open Education

A new policy on Open Educational Resources will be 'a starting to point to make Open Education the default approach for teaching at TU Delft' - TU Delft Strategic Priorities 2022

MOOCS / Open Course Ware

Open Methods

Electronic lab Notebooks (Rspace/eLABjournal)

protocols.io (PLOS)

'There is no open science if science is not open to all' (Whitaker and Guest 2020)

Open Participation

Open Science Community TU Delft @OSCDelft

Diversity and Inclusion at TU Delft

Citizen Science

82% Open Access

Open Publishing

TU Delft Open Publishing

TU Delft Open Access Fund (up to € 2000 for gold open access)

Publishing deals (check the Journal Browser)

Support for sustainable publishing (SciPost)

How to publish Plan S compliant?

You share, we take care (Taverne)

Contact

Esther Plomp
e.plomp@tudelft.nl
F131 (building 22)
estherplomp.github.io
@PhDToothFAIRy

i

Information

• TU Delft Open Science Programme 2020-2024
• tudelft.nl/open-science
• the-turing-way.netlify.app
• openlifesci.org





Research
4 Challenges


**OPEN SCIENCE:
JUST
SCIENCE
DONE RIGHT**

CIENCIA
ABIERTA:
Es ciencia hecha
correctamente

VU



 **Tecnológico
de Monterrey**

 **Institute
for the Future
of Education**
Partnership for Learning

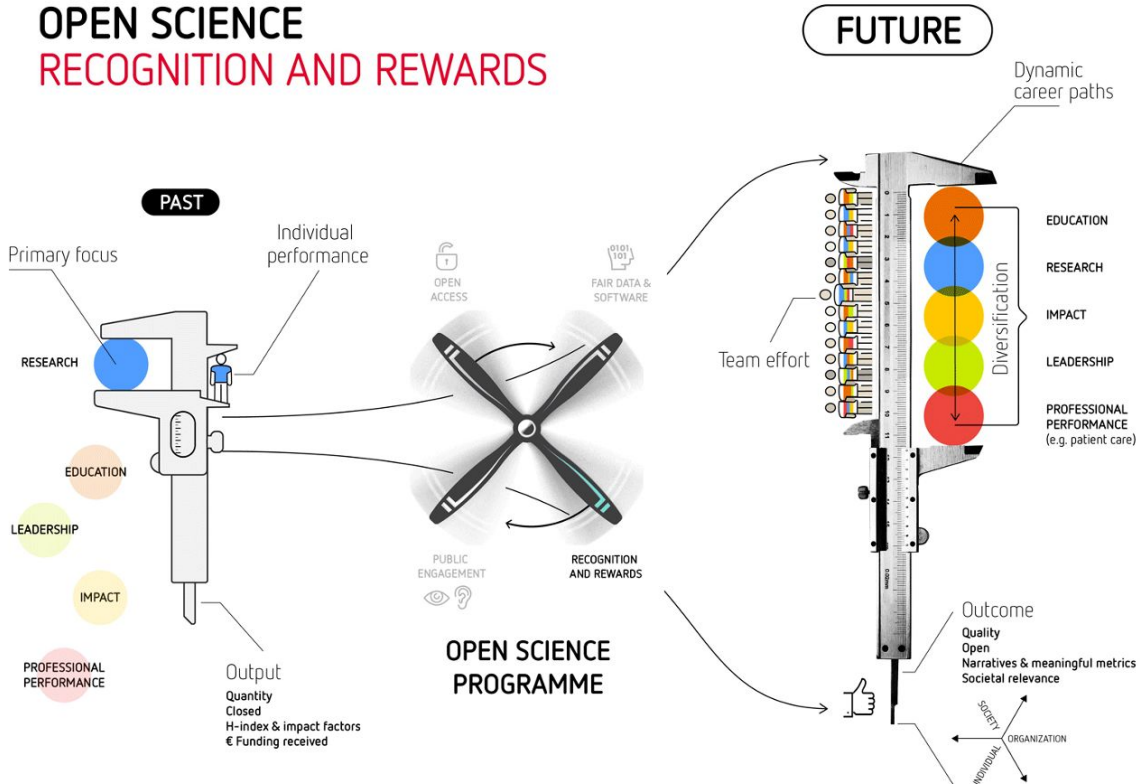
**Innovation Hub
Europe**

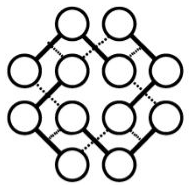

unesco
University Chair


UNIVERSITY OF LEEDS

Desde el pasado (enfoque en la investigación y lo individual) hacia el futuro (rutas dinámicas de carrera, diversificación, esfuerzo de equipo)

OPEN SCIENCE RECOGNITION AND REWARDS





Research
4 Challenges

¿Qué hay sobre la educación?

Declaración hacia un enfoque nacional para lo digital y los Recursos Educativos Abiertos >

Recursos Educativos

- Localizables,
- Interoperables y
- Reusables (FAIR)



VRIJE
UNIVERSITEIT
AMSTERDAM

STUDENT & EDUCATIONAL AFFAIRS



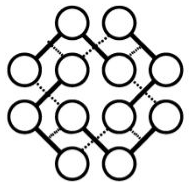
Regie op leermaterialen

Naar een
nationale aanpak
digitale en open
leermaterialen

Versie 1.0







Research 4 Challenges

Referencias / lecturas (Last visited on 21 September 2023)

Slide 1/2: <https://unesdoc.unesco.org/ark:/48223/pf0000379949> and <https://unesdoc.unesco.org/ark:/48223/pf0000383771>

Slide 3:

https://research-and-innovation.ec.europa.eu/strategy/strategy-2020-2024/our-digital-future/open-science_en#ref-8-ambitions-of-the-eus-open-science-policy

Slide 3: https://www.openscience.nl/sites/open_science/files/media-files/final_npos2030_ambition_document_and_rolling_agenda.pdf

Slide 4:

<https://openworking.wordpress.com/2022/06/28/open-science-is-like-a-buffet-take-what-you-can-and-what-benefits-you-now-come-back-for-more/>

Slide 5: <https://zenodo.org/record/1285575>

Slide 6: <https://www.uu.nl/en/news/open-science-track-recognition-and-rewards-presents-infographic>

Slide 6:

<https://www.universiteitenvannederland.nl/recognitionandrewards/wp-content/uploads/2019/11/Position-paper-Room-for-everyone%E2%80%99s-talent.pdf>

Slide 7: <https://npuls.nl/en/> and <https://www.versnellingsplan.nl/Kennisbank/verklaring-nationale-aanpak-digitale-en-open-leermaterialen> (only available in Dutch)

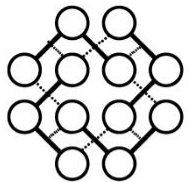
Slide 8: <https://journals.plos.org/ploscompbiol/article?id=10.1371/journal.pcbi.1007854>

w.van.wezenbeek@vu.nl / <https://www.linkedin.com/in/wezenbeek/>



Innovation Hub
Europe





Research
4 Challenges

Conectando y colaborando



**Knowledge
Equity
Network**

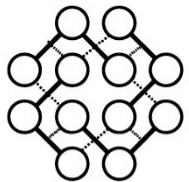
**Red de
Equidad en el
Conocimiento**

<https://knowledgeequitynetwork.org/>



Innovation Hub
Europe

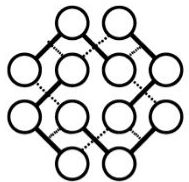




Research
4 Challenges

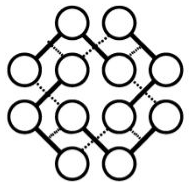
Enfoque holístico





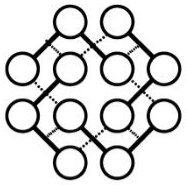
Research
4 Challenges





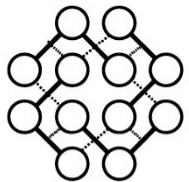
Research
4 Challenges





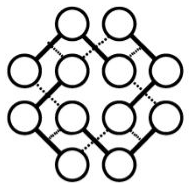
Research
4 Challenges





Research
4 Challenges





Research
4 Challenges

Tu identidad e involucramiento profesional

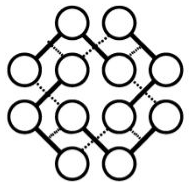


Images produced with dream by Wombo



Innovation Hub
Europe





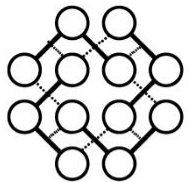
Research
4 Challenges

Nos vemos en las redes



<https://knowledgeequitynetwork.org/>





Research
4 Challenges

Movilizando el aprendizaje en el Bootcamp

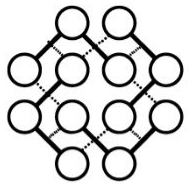
Ingresa a www.menti.com e ingresa el código
2874 3940

También puedes escanear el código QR →



Innovation Hub
Europe





Research
4 Challenges

Closed question

Hay muchas razones para abrir tus recursos educativos o de investigación. ¿Cuál es el tuyo?

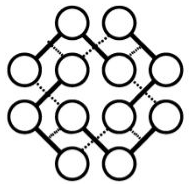
Visibilidad

Integridad

Reproducibilidad

Política





Research
4 Challenges

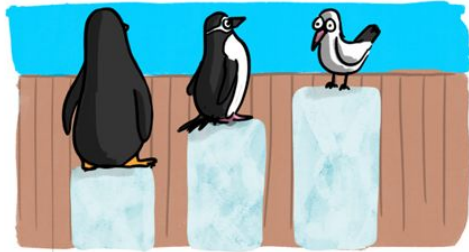
Discussion

Open question

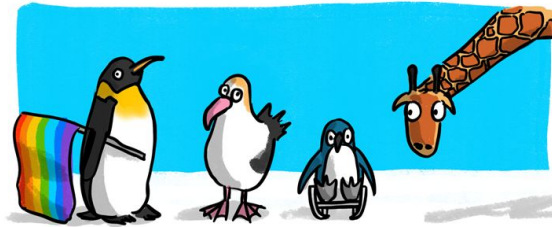
¿Qué ejemplos conoces de tu entorno que abren el proceso de investigación/educación?



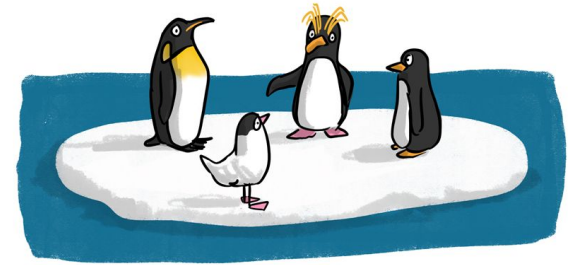
Equity, Diversity and Inclusion in Open Education: Community and Collaboration



EQUITY



DIVERSITY



INCLUSION



What is GO-GN?

The aims of the GO-GN are to:

- raise the profile of research into open education
- offer support for those conducting doctoral research in this area
- promote equity and inclusion in the field of open education research
- develop openness as a process of research.

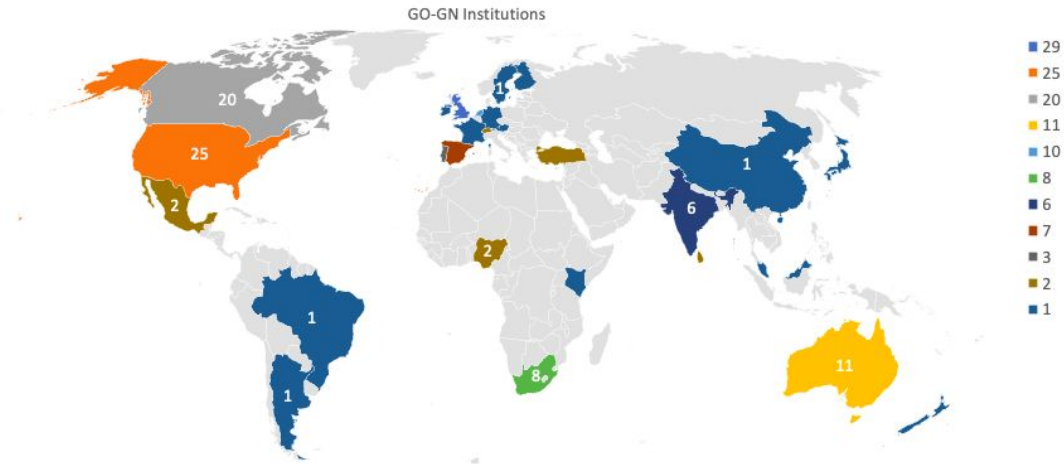


Innovation Hub
Europe





The network

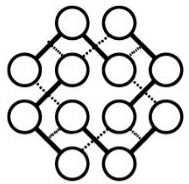




Overview of the Project

- Acknowledgements
- A GO-GN project and supported by the Hewlett Foundation
- For GO-GN –as an open research community- to be more diverse, equitable & inclusive.
- To incorporate perspectives & experiences of underrepresented communities.
- Develop EDI Guidelines for GO-GN
- Phase 2 of the EDI project in Latin America (Phase 1 – Africa)

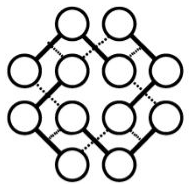




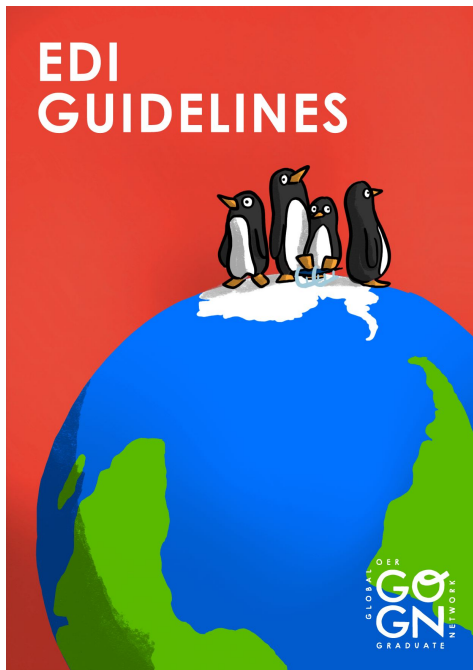
Process and Methodology

- Interviews: 12 key stakeholders (including GO-GN members) from Latin America: Argentina, Brazil, Chile, Colombia, Costa Rica, Mexico and Uruguay.
- Categorisation (coding) and analysis of data undertaken using NVivo.
- Online workshop with experts in OER (workshop informed by the interviews) – to validate and gather additional data.
- Dissemination of results through presentations, blog post and publications.





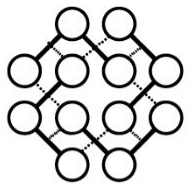
EDI Guidelines = Phase 1 and 2



- Definitions
 - Equity, Diversity, Inclusion, Justice, Equity, Diversity and Inclusion (JEDI), Inclusion, Diversity, Equity and Accessibility (IDEA)
- OE initiatives in Africa and Latin America
- Phase 1: EDI in Africa
- Phase 2: Latin American context and findings
- GO-GN Guidelines for EDI in Open Education
 - For higher education institutions
 - For individual practitioners
 - For GO-GN
- Conclusions and final considerations



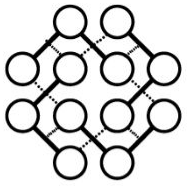
https://go-gn.net/gogn_outputs/edi-guidelines/



EDI guidelines for higher education institutions include:

- Raise awareness about EDI concepts in open education
- Develop small, but actionable elements for the development of EDI in short and long terms.
- Develop a diversified measurement of success, in addition to metrics.
- Understand, identify and remove structural barriers to collaboration, including technology and digital infrastructures.

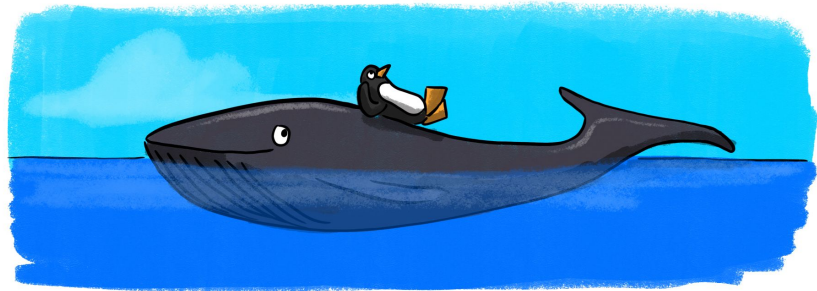


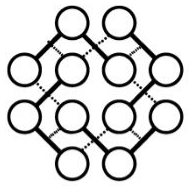


Research 4 Challenges

Some recommendations for individual practitioners are:

- To acknowledge limitations of people's understanding of EDI, and their willingness to engage with it.
- Create a sense of belonging, where learners are valued, leveraged, welcomed, and respected.
- To recognise barriers which might be intergenerational, and part of a historical legacy affecting individuals and communities.



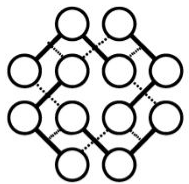


Research 4 Challenges

For GO-GN (or any network initiative)

- Work towards decreasing the language barrier in GO-GN.
- Use members (students and alumni) as ambassadors to GO-GN in their respective countries (present in local conferences).
- Provide small research grants to conduct research in open education to students from the Global South.
- Monitor and review the guidelines annually to ensure that equity, diversity and inclusion is continually promoted at all levels of GO-GN's operation and practices.



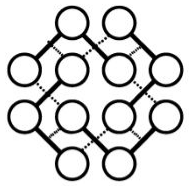


Research 4 Challenges

So Far

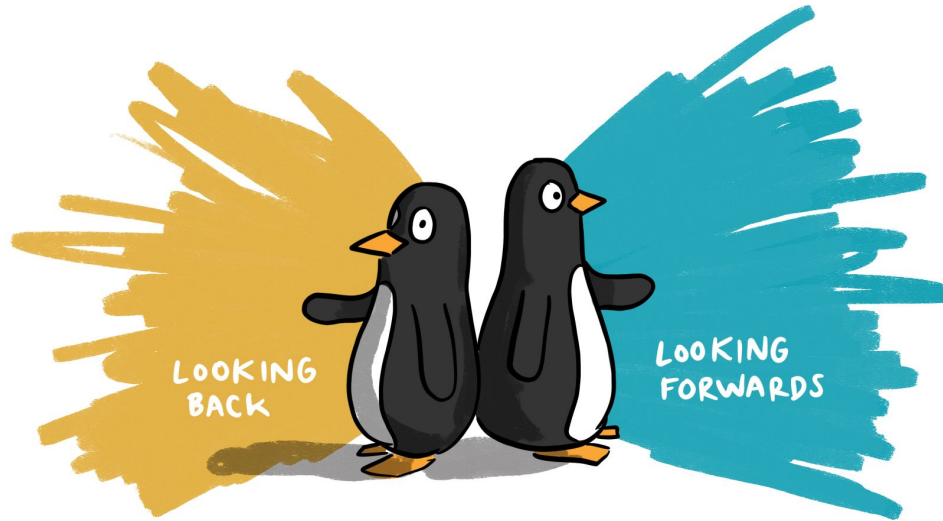
1. Encouraging and supporting researchers and practitioners from the Global South to be achieve members of the community so that their voices are heard.
2. Fellowships and scholarships
3. Disseminate research findings in other languages
4. To regularly review all GO-GN open practices and selection procedures so that fairness, diversity, equity and inclusion are upheld at all cost.





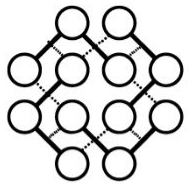
Research
4 Challenges

Planning the next phase of the EDI project



© VISUAL THINKERY





Closed question

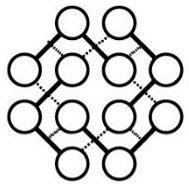
Which region do you think we should focus the EDI in Open Education research on during the next phase?

Asia

Europe

Middle East

Oceania (South Pacific)



Research
4 Challenges

Discussion

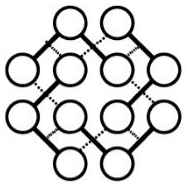
Open question

What are the opportunities and challenges of incorporating Equity, Diversity and Inclusion in your research or teaching?

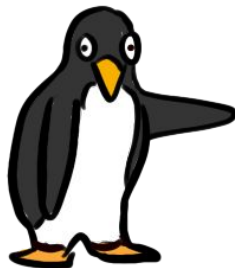


© VISUAL THINKERY



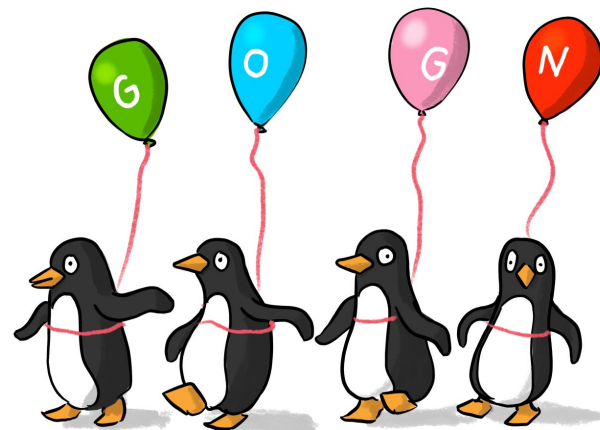


Research
4 Challenges



Get involved!

@GOGN_OER
#GO_GN
go-gn.net



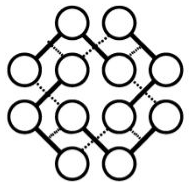
© VISUAL THINKERY

#GO_GN10



Innovation Hub
Europe





Research
4 Challenges

#Research4Challenges #FutureEducationBootcamp
#ConstruyendoEducación



Innovation Hub
Europe





Research 4 Challenges

The authors would like to thank the financial support from Tecnológico de Monterrey through the “Challenge-Based Research Funding Program 2022” Project ID # I004 - IFE001 - C2-T3 – T

Los autores agradecen el apoyo financiero del Tecnológico de Monterrey a través del "Programa de financiación de la investigación basado en retos 2022" Proyecto ID # I004 - IFE001 - C2-T3 – T





Research 4 Challenges

The content of this work is covered by a Creative Commons Mexico 2.5 "Attribution-Non-Commercial-Reciprocal Licensing" (<http://creativecommons.org/licenses/by-nc-sa/2.5/mx/>) which allows you to copy, distribute and publicly communicate the work, as well as to make derivative works under the condition of acknowledging the intellectual authorship of the work in the terms specified by the author. This work may not be used for commercial purposes, and if you alter, transform or create a work from this work, you must distribute the resulting work under a licence equal to this one. For any use other than the above, written permission must be sought from the author.

El contenido de este trabajo está amparado por una "Atribución-No Comercial-Licenciamiento Recíproco" de Creative Commons México 2.5 (<http://creativecommons.org/licenses/by-nc-sa/2.5/mx/>) con lo cual se permite copiar, distribuir y comunicar públicamente la obra, así como hacer obras derivadas bajo la condición de reconocer la autoría intelectual del trabajo en los términos especificados por el propio autor. No se puede utilizar esta obra para fines comerciales, y si se altera, transforma o crea una obra a partir de esta obra, se deberá distribuir la obra resultante bajo una licencia igual a ésta. Cualquier uso diferente al señalado anteriormente, se debe solicitar autorización por escrito al autor.

